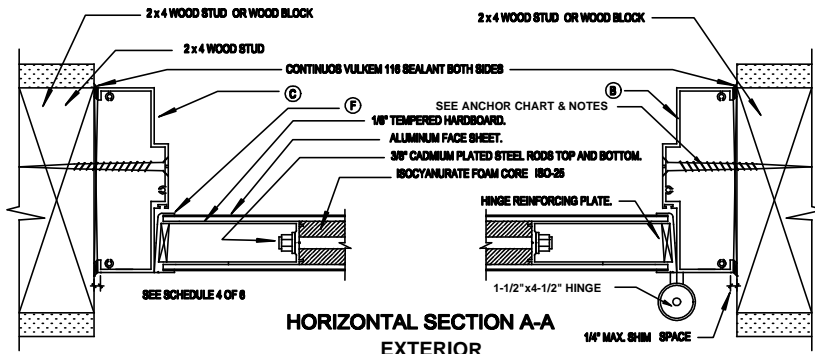


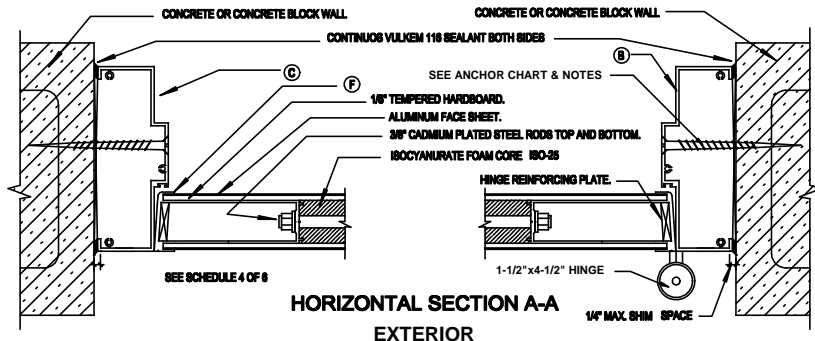
HORIZONTAL SECTION A-A

EXTERIOR



HORIZONTAL SECTION A-A

EXTERIOR



HORIZONTAL SECTION A-A

EXTERIOR

ALUMINUM FRAME: ALUMINUM DOOR FRAMES SHALL BE SERIES FR575 1 -3/4" X 5-3/4" OPEN BACK WITH AN INTEGRAL DOOR STOP.

MATERIAL: FRAME MEMBERS SHALL BE MADE OF 6063-T6 EXTRUDED ALUMINUM ALLOY WITH A MINIMUM WALL THICKNESS OF 0.125" FOR THE FR575. YIELD STRENGTH OF 28,750 PSI. ALL SCREWS AND MISCELLANEOUS FASTENERS SHALL BE STAINLESS STEEL, OR OTHER CORROSION RESISTANT MATERIAL. WEATHERSTRIPPING SHALL BE COMPOUND SANTOPRENE BULB.

CONSTRUCTION: FRAME SHALL BE SQUARED CUT TO PROVIDE NEAT HAIRLINE JOINTS. JAMBS AND HEADER SHALL BE FASTENED WITH STAINLESS STEEL SCREWS. ALL FRAMES SHALL BE MORTISE FOR HINGES AND LOCK STRIKE PLATES. SURFACE MOUNTED HARDWARE SHALL BE DRILLED AND TAPPED IN THE FIELD. HINGE, LOCK AND STRIKE REINFORCING PLATE SHALL BE MADE OF 1/4" ALUMINUM PLATE 6063-T6 ALLOY.

INSTALLATION: INSPECT WALL CONDITION, IF NECESSARY MAKE ANY WALL REPAIRS OR ADJUSTMENTS BEFORE INSTALLATION OF DOOR FRAME. ASSEMBLE DOOR FRAME BY ATTACHING JAMBS TO HEADER USING (3) #10x1" PAN HEAD SCREWS ON THE FR575 FRAME (DO NOT FILLED JAMBS OR HEADER WITH MORTAR). ERRECT FR575 HINGE JAMB TO WALL AS PER ANCHOR SCHEDULE ON SHEET 4 OF 6 STARDING AT 7" FROM TOP. AFTER HINGE SIDE IS INSTALLED START WITH LOCK SIDED AND REPEAT THE SAME PROCEDURE. USE SHIMS AT HINGE AND LOCK SIDE TO PROPERLY LEVELED, SQUARED AND PLUMBED FRAME IF NECESSARY (MAXIMUM SHIM SPACE TO BE 1/4").

HARDWARE: EACH DOOR SHALL BE EQUIPPED WITH (3) 4 1/2" x 4 1/2" x .134" HINGE, ATTACHED TO DOOR AND FRAME WITH (4) 12-24 FLAT HEAD MACHINE SCREW, (1) YALE 5407 CYLINDRICAL LOCK 2-3/4" BACKSET AND 2-1/8" BORE WITH A 4-7/8" STAINLESS STEEL STRIKE PLATE, (1) BUMPER THRESHOLD 1" HIGH. AND (1) DOOR SWEEP #DS-10 OR EQUAL.

PROTECTION & CLEANING: AFTER ERECTION, THE GENERAL CONTRACTOR SHALL ADEQUATELY PROTECT EXPOSED PORTIONS OF ALUMINUM SURFACES FROM DAMAGE BY PLASTER, LIME, ACID, CEMENT, OR OTHER HARMFUL COMPOUNDS. AFTER INSTALLATION, ALL ALUMINUM SHALL BE CLEANED WITH SOAPY WATER OR OTHER MILD CLEANING SOLUTION.



ALUTECH CORPORATION
8548 NW 64th STREET
MIAMI, FL 33166
PH: 305/593-2080
FAX: 305/591-8481

FR575 SPECS

| | |
|----------|------------|
| DATE: | DRAWN BY: |
| DWG No.: | SHEET No.: |

JOB No.: